



File Name: canon mf 8180 service manual.pdf

Size: 3979 KB

Type: PDF, ePub, eBook

Category: Book

Uploaded: 7 May 2019, 18:50 PM

Rating: 4.6/5 from 751 votes.

Status: AVAILABLE

Last checked: 9 Minutes ago!

In order to read or download canon mf 8180 service manual ebook, you need to create a FREE account.

[**Download Now!**](#)

eBook includes PDF, ePub and Kindle version

[Register a free 1 month Trial Account.](#)

[Download as many books as you like \(Personal use\)](#)

[Cancel the membership at any time if not satisfied.](#)

[Join Over 80000 Happy Readers](#)

Book Descriptions:

We have made it easy for you to find a PDF Ebooks without any digging. And by having access to our ebooks online or by storing it on your computer, you have convenient answers with canon mf 8180 service manual . To get started finding canon mf 8180 service manual , you are right to find our website which has a comprehensive collection of manuals listed.

Our library is the biggest of these that have literally hundreds of thousands of different products represented.



Book Descriptions:

canon mf 8180 service manual



Service Manual Description; 2. Technical Reference; 3. Disassembly and Assembly; 4. Maintenance and Inspection; 5. Troubleshooting; 5.1 Measurement and Adjustment; 5.2 Service Tools for Canon LaserBase MF8180C; 5.3 Location of Convector; 5.4 Canon LaserBase MF8180C. Error Code; 5.5 Service Mode; 6. Appendix. Service Manual All trademarks and copyrights in the published materials belong to their respective owners. By parts code you can check what other devices it is used. You can print your Parts List or export to Excel to further work with it. We only help you to create your parts list for request from your suppliers. Add your headers and comments. Use saved Parts Lists as templates to create new lists. Change the contents of the old list and save it as new. You can add, delete list items, change headers, comments and quantity of spare parts. In the event of major changes in the contents of this manual over a long or short period, Canon will issue a new edition of this manual. Indicates an item requiring care to avoid electric shocks. Indicates an item requiring care to avoid combustion fire. Indicates an item prohibiting disassembly to avoid electric shocks or problems. In the diagrams, represents the path of mechanical drive; where a signal name accompanies the symbol, the arrow indicates the direction of the electric signal. These ordinances apply to laser products manufactured on and after August 1, 1976, and sale of laser products is prohibited within the US unless they bear a certificate of compliance. Then, the documents are fed to the separation roller by the pickup roller, and separated one sheet each using differences in the coefficient of friction among the separation roller, documents, and separation guide. Twin beam method Two laser diodes LD1, LD2 are built into the laser unit. The circuit diagram of the scanner motor control is illustrated

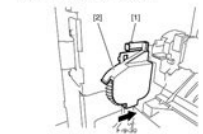
below. <http://juditphotography.com/picture/userfiles/drug-detection-dog-training-manual.xml>

- **canon mf 8180 service manual, canon mf 8180 service manual, canon mf 8180 service manual download, canon mf 8180 service manual pdf, canon mf 8180 service manual free, canon mf 8180 service manual online.**

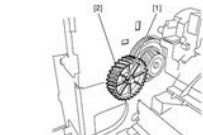
9.4.11 Fixing/Duplex Drive Unit**9.4.11.1 Removing the Fixing Drive Unit**

imageCLASS MF7460 / imageCLASS MF7470 / imageCLASS MF7480

- 1) Draw out the drum unit.
- 2) Detach the rear cover.
- 3) Detach the left cover (rear).
- 4) Remove the left door.
- 5) Remove the fixing unit.
- 6) Detach the RAM cover.
- 7) Remove the SERI/AM.
- 8) Detach the LAN cover.
- 9) Detach the IP cover.
- 10) Remove the image processor PCB with the PCB mount.
- 11) Release the claw [1] on the gear cover, and then remove the gear cover [2] by sliding it in the direction of the arrow.

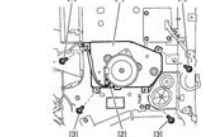


- 12) Release the gear stopper [1], and then remove the gear [2].



- 13) Remove the fixing drive unit [1].

- Connector [2], 1 pc.
- Screw [3], 4 pcs.

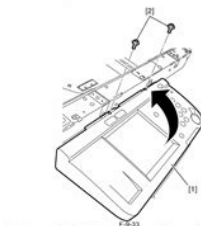
**9.4.12 Operation Panel Unit****9.4.12.1 Removing the Operation Panel Unit (Touch Panel Type)**

imageCLASS MF7460 / imageCLASS MF7470 / imageCLASS MF7480

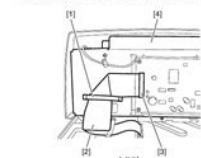
- 1) Detach the reader front cover.

- 2) Turn over the operation panel unit [1].

- Screw [2], 2 pcs.



- 3) Disconnect the flexible cable holder [1] and disconnect the connector [2] of the flexible cable [3] to remove the operation panel unit [4].

**9.4.13 DC Controller PCB****9.4.13.1 Removing the DC Controller PCB**

imageCLASS MF7460 / imageCLASS MF7470 / imageCLASS MF7480

Step 9 Auxiliary ITB cleaning roller charging Residual toner on the ITB is charged in order to be held on the ITB. Step 10 ITB cleaning roller charging Residual toner on the ITB is charged. Step 11 ITB cleaning Residual toner on the ITB is transferred onto the drum. Here, the toner becomes uniformed negative potential. The printer charges the uncharged toner by applying DC bias onto the blade inside the toner cartridge. A DC positive bias is applied to the secondary transfer roller to charge the back side of a fed paper. This allows the toner on the ITB to transfer onto paper positively. At the completion of secondary transfer, a DC negative bias is applied to the secondary transfer roller to avoid soiling the back of paper with the toner on the ITB. The method enables the machine to start up quickly and its heater to use little power while the machine is in a standby state. The machine may therefore be characterized by a short wait time and low energy consumption. The machine applies a positive DC bias to its pressure roller for the purpose of reinforcing the retention of toner on print paper, consequently preventing stray toner. Drum cartridge Screw Waste toner transport plate DC bias Screw negative Photosensitive drum Residual toner Stirrer Waste toner case. The CPU IC101 in the DCNT Board controls the highvoltage power supply circuit and the sub highvoltage power supply circuit through the ASIC IC102 to generate the biases. Therefore, after transferring the first color, the primary transfer DC positive bias is increased for the toner in the rest of the colors to gain the holding force of the toner. The DCNT Board forms density patterns in each color on the ITB as varying the developing bias when specified conditions are met. Then the DCNT Board measures the density of the patterns with the density sensor and controls the developing bias to obtain a proper density based on the measured density. <http://amybarryphotography.com/images/uploads/drug-delivery-system-laboratory-manual.xml>

SERVICE MANUAL

Color imageCLASS MF640 Series



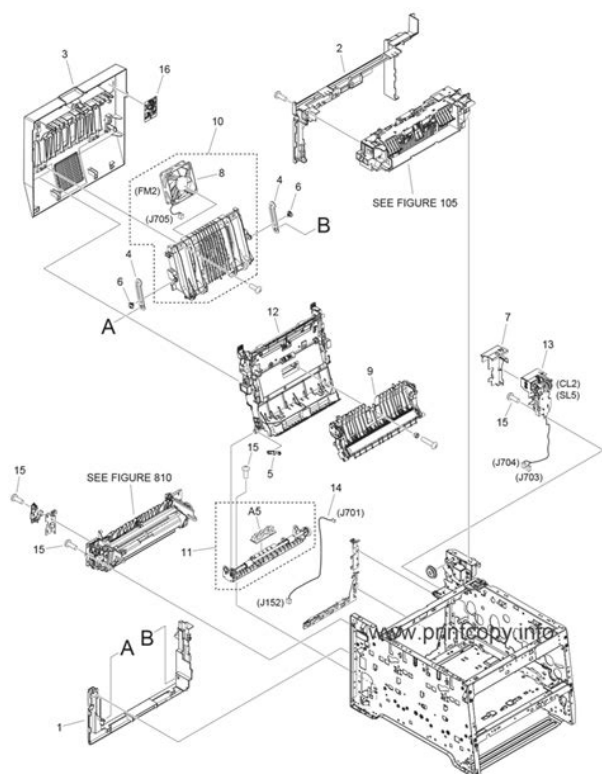
Canon

January 24, 2019
Rev. 2

There are four toner cartridges in Y, M, C, and Bk, which are the same in structure. The following indicates the configuration of the cartridges and loads. The developing rotary position detection is also performed by the DCNT Board monitoring the rotary engaging sensor PS712. Developing rotary Drive gear Photosensitive Memory tag drum Memory tag. In monochrome printing, it is performed just for the Bk cartridge. Note 2. When the power is turned on, the upper cover is closed, or a print job is over, the DCNT Board checks on the following 2 items, and will assume that the cartridge has reached the end of its life if any of them reaches a specific value life of photosensitive drum hours of use The unit is structured with the secondary transfer roller and engaging lever, which are operated by the main motor drive. The operations of this control are described in the following 1 At printing, the DCNT Board checks that the secondary transfer roller is at its home position Note1 in secondary transfer roller home position detection. The machine possesses 2 inlet slots for paper i.e., multifeeder tray and paper feeder and 2 outlet slots faceup tray and facedown tray. The operations of this function are discussed below. This printer utilizes three protective functions performed by the following parts, to prevent an abnormal temperature rise of the heater Fixing unit Power supply unit. When the power is turned on and DC power is supplied from the power supply unit to the DCNT Board PCB, the CPU starts to control the operations of the printer. Then, when the printer enters the standby status, the CPU drives loads such as the laser diodes, motors, solenoids, etc. The CPU monitors the MAIN MOTOR SPEED DETECTION MAIMFG signal. The encoder used in this printer consists of a disk, reflective sensor, and detection unit. In CARPS, the following takes place so as to generate output as fast and as easily as possible.

Host computer GDI data from application Converts data into GDI compatible resource data Canon Advanced Raster Printing System Analyzes resource data, Displays on screen and develops it into print data. Be sure to observe the following removing the 2 types of cartridges toner, drum from he machine. F33 5 Repeat the steps 3 and 4 to remove the toner cartridges for each color. 3.1.3 Drum cartridge removal 00078338 1 Open the top cover unit and remove the drum cartridge.If you release the lowest one first, the second lowest, and then the top, it becomes easy. F351 3.2.5.3 Removing the Left Cover with the reader assembly intact F3101 F397 The connector on the registration clutch side is designed to prevent discon 3.2.9.8 Removing the Right Frame nection. F3167 F3163 4 Close the reader assembly;. F3331 F3335 3.3.2.2 Removing the Scanner Unit. F3456 F3460 3.3.10.2 Removing the Scanner Unit. F3579 The connector on the registration clutch side is designed to prevent discon nection. If you have to detach the registration clutch, be sure to disconnect the

connector J113 on the DC controller PCB side. F3925 F3921 The connector on the registration clutch side is designed to prevent disconnection. F31002 F3998 The connector on the registration clutch side is designed to prevent disconnection. F31013 Make sure that the 2 springs are fitted onto the bosses on the fixing upper cover when reassembling the cover. Also, be sure to wait until the fixing assembly has cooled before removing it after disconnecting the power cord. F31030 Make sure that all cables on the fixing film unit are hooked into the fixing separation guide when reassembling the guide. Platen glass cover Platen glass F41 4.1.2 Cleaning the ADF Area 00083062. If any failure is found, a service engineer is to clear the problem and to give the instruction to a user.

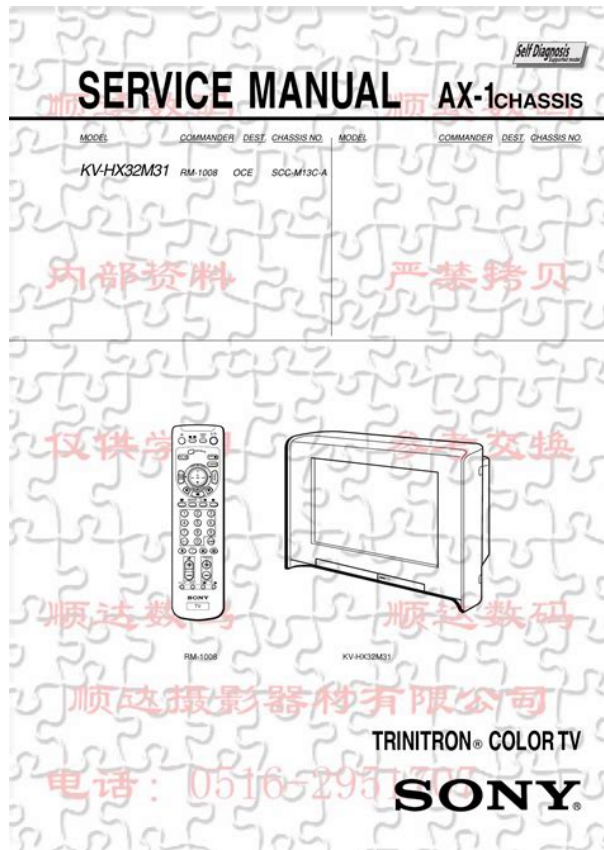


<http://www.raumboerse-luzern.ch/mieten/bosch-maxx-wfl-2000-washing-machine-manual>

Using the error code, the user or the service man can readily find out how to correct the fault by simply referring to the Users Manual or service manual. Replace the main motor. E021 developing rotary motor fault Check the connector of the developing rotary motor. Replace the developing rotary motor. Replace the DCNT Borad PCB. However, detailed descriptions of only service data newly added to this machine are provided. G3 signal transmission test The modem sends G3 signals from the modular jack and the speaker. V.34 G3 signal transmission test The modem sends V.34 G3 signals from the modular jack and the speaker. These tests test the following faculties of this fax. In this test, check that the display, LED lamps and keys on the operation panel are operating correctly. The LED lamps other than the Energy Saver key go on. Please do not offer the downloaded file for sell only use it for personal usage. Looking for other manual For this no need registration. May be help you to repair. You could suffer a fatal electrical shock. Instead, contact your nearest service center. Note! To open downloaded files you need acrobat reader or similar pdf reader program. In addition, Also some files are djvu so you need djvu viewer to open them. These free programs can be found on this page needed progs If you use opera you have to disable opera turbo function to download file. If you cannot download this file, try it with CHROME or FIREFOX browser. Translate this page Relevant PRINTER forum topics Canon iP2500 Szevaszto. Van egy Canon iP 2500 as nyomtatom amibol a szines patron hanyzik. Most viszont egy patronnal szabotall. Lehet e

kezdeni így valamit a nyomtatóval Fejet keresnek a fenti nyomtatóhoz. CANON MG5250 Nyomtató B200 hibakód Sziasztok! Ismeri valaki Canon MF8360 CDN szkennelő hiba Sziasztok. Nemrég vettem egy használt Canon MF8360 CDN multifunkciós nyomtatót.

<https://fufolia.com/images/burndy-y46-manual.pdf>



A PCrol küldött doksit szépen kinyomtatja színesben vagy feketefehérben is, de a szkennelés eredménye mindig egy üres lap lesz. A legújabb firmware van rajta 12.01, csináltam RCON és factory resetet, kalibráltam a CIS modult fehér szint beállítás, de nem segített. Talán a CIS modul a hibás. Belenéztem a gépbe és kiderült, hogy a CIS modul típusa FK31887, viszont a neten fellelhető infók alapján a CIS típusa helyesen FM49076 kellene legyen. Talán ezt az eszközt valamikor már javították és akkor kerülhetett bele a FK31887. Vajon a FK31887 jó ebbe a nyomtatóba. Udv Gabor Similar manuals You can write in English language into the forum not only in Hungarian. This page requires Javascript. Modify your browsers settings to allow Javascript to execute. See your browsers documentation for specific instructions. To install your download click on the name of the downloaded file. Please click below to find a quick resolution to your inquiry. The driver may be included in your OS or you may not need a driver. Recommended Drivers File Name Date File Size Optional Drivers File Name Date File Size Recommended Software File Name Date File Size Optional Software File Name Date File Size Scroll down to easily select items to add to your shopping cart for a faster, easier checkout. Visit the Canon Online Store Maximum Monthly Duty Cycle 30,000. Maximum Monthly Duty Cycle 30,000. Maximum Monthly Duty Cycle 30,000. Maximum Monthly Duty Cycle 30,000. The manuals for this machine are divided as follows. Please refer to them for detailed. Page 4 How This Manual Is Organized How This Manual Is Organized. Chapter 1 Introduction. Chapter 2 Paper Handling. Chapter 3 Document Handling. Chapter 4 Printing. Page 5 Contents Contents Thank you for purchasing Canon Color imageCLASS MF8180c. Please read this manual Page 10 Messages Displayed in the LCD Page 11 Legal Notices Page 12 IMPORTANT Page 14 Legal Limitations on the Usage of Your Product and the.



Use of ImagesPage 15 Important Safety InstructionsPage 20 ConsumablesIntroductionPage 24 Operation PanelPage 25 Standby DisplayPage 26 Energy Saver ModeWhen no operations arePage 27 NOTEPage 28 Paper Handling Paper Handling 2Page 29 Storing Color Print PaperPage 34 5 Load the paper stack so that the bottom of the page touches thePage 36 7 Set the paper cassette into the machine.Page 37 Opening the MultiPurpose TrayClosing the MultiPurpose Tray. Page 39 Loading Paper in the MultiPurpose TrayPage 40 IMPORTANTPage 43 4 Loosen the hard corners of the envelopes and flatten curls asCassette and MultiPurpose TrayPage 47 Specifying the Paper TypeWhen using paper otherPage 49 Selecting the Paper Output AreaPage 50 Paper Type Paper Output Area The Number of Output SheetsPage 52 Document Handling Document Handling 3Page 53 NOTEPage 57 The Paper Path of the ADFPage 59 2 Click the corresponding printer driver icon. Page 60 Printing DocumentsPage 61 Canceling PrintingPage 69 NOTEPage 72 Removing the Background ColorThese features allow youPage 74 3 Use the numeric keys to enter the number of copies you want.Page 77 Scanning Scanning 6Page 79 More InformationPage 81 Confirming and Deleting a Fax JobPage 89 Replacing the CartridgesPage 91 6 Make sure that the toner cartridge you want to replace is at thePage 93 9 Hold the toner cartridge as shown in the figure, shake it gently 5Page 94 IMPORTANT. The image quality may deteriorate if you doIf the tape is severed, itPage 97 Precautions for Handling Toner CartridgesCareless handling canThe image quality may deteriorate. Do notPage 100 The Clean Earth CampaignPage 103 Shipping. Apply the UPS authorized returning label provided in this guide. Residents of Alaska and Hawaii Do not use the. Page 104 CANADA PROGRAMCANADA PROGRAMME. Page 105 Working to preserve endangered species is a longstanding Canon interest. To this end, for every cartridge collected, Canon Canada donates.

Page 106 Replacing the Drum CartridgePage 110 5 Remove the packing materials 7 pieces.Page 111 Remove the packing materials e and f by holding the grips and pulling them in theThe image quality may deteriorate. Do notPage 114 IMPORTANTPage 116 Storing a Drum CartridgeIf the machine is. Page 118 Carrying the Machine by the SidesPage 119 Troubleshooting Troubleshooting 9Page 122 6 Lift the scanning platform a and open the cartridge cover until itPage 123 If paper is jammed in the removed drum cartridge, do not try to pull the paper out. The image quality may deteriorate. Do notPage 126 IMPORTANTPage 129 5 Remove the drum cartridge from the machine.Page 130 IMPORTANTPage 132 8 Take the drum cartridge out of the protective bag.Page 133

IMPORTANTPage 136 CAUTIONPage 138 21 Hold the grip on the fuser unit and install it securely. Page 139 Paper Jam in the Drum CartridgePage 140 IMPORTANTThe image quality may deteriorate. Page 142 LCD MessagesCause 1 A problem has occurred in the machine. Remedy Reset the machine by opening the cartridge cover. Page 144 MEMORY FULLCause When you canceled a job being processed, the next job on the spooled job listPage 147 Paper Feeding ProblemsPage 148 Q Have you fanned the paper stack before loading it in the cassette orPage 150 Copying ProblemsPage 152 Copies are too dark or too light. Page 153 Q Is proper paper is not being usedPage 155 Printing ProblemsPage 156 Scanning ProblemsPage 157 General ProblemsPage 158 If You Cannot Solve the ProblemPage 159 Machine Settings Machine Settings 10CHAPTERThe list of all the settings is alsoPage 161 Name DescriptionsPage 162 Name DescriptionsSPECIAL SETTINGS5 When heavy paper of rough surface is used, somePage 164 COPY SETTINGSPage 168 Appendix Appendix 11SpecificationsSymbols periodic, 81Page 172 N Power socket, 13Numeric keys, 14 PRINT DONE TONE setting, 103. PDF format Note File names having the extension.pdf are PDF files.

<http://lisahyatthehealth.com/wp-content/plugins/formcraft/file-upload/server/content/files/162721790db514---brc-300-manual.pdf>

You need to have Adobe Acrobat Reader installed on your computer to read PDF files. Follow the instructions below to download manuals in PDF format. 1. Click the file name you want to download. The download will start automatically. 2. Files will be saved on the computer desktop. 3. Doubleclick the downloaded file to open it. You may download and use the Content solely for your personal, noncommercial use and at your own risks. Canon shall not be held liable for any damages whatsoever in connection with the Content, including, without limitation, indirect, consequential, exemplary or incidental damages. You shall also not and shall not let others reproduce, modify, reformat or create derivative works from the Content, in whole or in part.

<https://www.thebiketube.com/acros-bosch-maxx-wfl-2060-manual>